

Exercise 42

For the following exercises, use the graphs of f , shown in Figure 4, and g , shown in Figure 5, to evaluate the expressions.

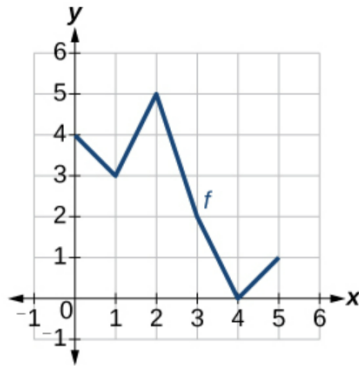


Figure 4

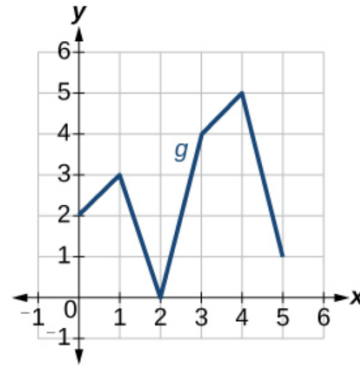
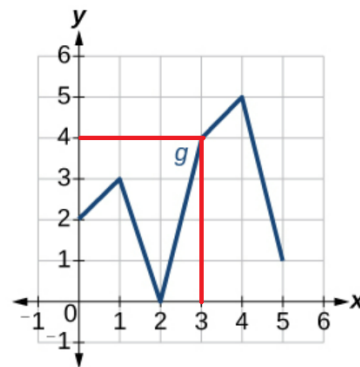
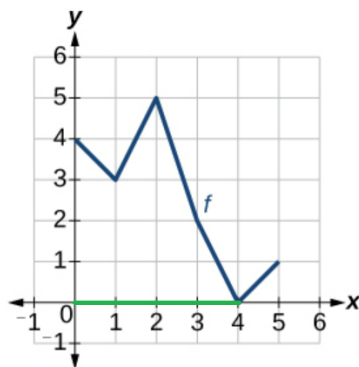


Figure 5

$$f(g(3))$$

Solution

Notice from the graphs that $g(3) = 4$ and $f(4) = 0$.



Therefore,

$$f(g(3)) = f(4) = 0.$$